

Fahrenheit

Choice of Professionals

LFP SERIES PORTABLE ELECTRIC HYDRONIC HEATERS

- SAFE, CLEAN, QUIET HEAT ANYWHERE IT'S NEEDED.
- HEATS EVENLY TO REDUCE ROOM TEMPERATURE VARIATIONS.
- CRISP STYLING, ATTRACTIVE FINISH BLENDS WITH ANY DECOR.
- AUTOMATIC THERMOSTAT AND HIGH-TEMPERATURE SHUT-OFF

APPLICATIONS

Fahrenheit LFP series hydronic heaters combine the comfort and safety of traditional heating systems with the freedom and mobility of portable heating systems. They provide uniform, gentle floor-to-ceiling warmth and comfort for use in the bathrooms, and small areas in homes, apartments, condos and offices.

FEATURES

MULTIPLE WATTAGES – 120 volt models range from 750 watts (2560 BTU/hr) to 1500 watts (5120 BTU/hr). Dual heat model LFP 6152 lets user select 750 or 1500 watts with a turn of a dial.

AUTOMATIC THERMOSTAT – Automatic thermostat lets you maintain desired comfort level. Merely dial up or down to the level of comfort you prefer. The thermostat will automatically control the heater to maintain that level. Heater design produces gentle, radiant heat even after the thermostat's been satisfied.

CONTEMPORARY STYLING – Low-profile design and Navajo White color blends with any room decor. Tuck-away carrying handle is out of sight when not in use.

STEEL UNITIZED BODY – High-impact Lexan and steel unitized body resists dents, scratches and rust for long cabinet life.



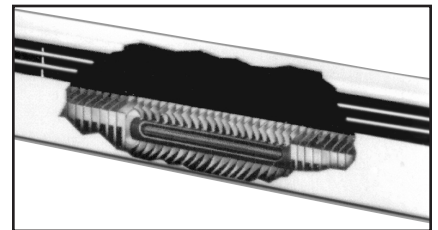
FILE #E37116

SAVES ENERGY – Between power-on cycles, stored up heat from the liquid filled element keeps on radiating warmth more efficiently than baseboard heaters. Hydronic heaters are energy-efficient because 100% of the heat generated is convected into the room. And individual room control means energy costs are lower than when central heat is wasted on unused rooms.

AUTOMATIC THERMAL CUTOUT – Linear high temperature cut-out safety checks the entire length of heater and will automatically shut off heater in the event of accidental air blockage.

NO MAINTENANCE SEALED SYSTEM – Nothing to fill or replace. No piping, plumbing or water supply. Liquid solution is permanently sealed.

UNIFORM HEAT TRANSFER – Large copper element reservoir maximizes heat retention while oversized aluminum fin surface are helps provide uniform heat transfer the entire length of the heater, assuring operating temperatures well below conventional baseboards.

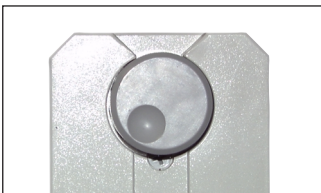


SELECTION CHART

CATALOG NO.	VOLTS*	WATTS	BTU/HR.	AMPS.	SIZE	SHIP WT.
LFP6152	120	750 1500	2560 5120	6.3 12.5	58"L X 8.5"H X 3"D	21lbs.

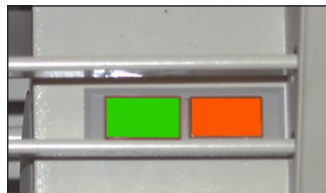
VALUE ADDED FEATURES

"Smart Stat"



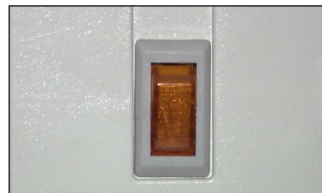
Set it at desired setting and the heater will use only the required wattage to keep the area warm—750 watts/low or 1500 watts/high.

Wattage indicator Lights



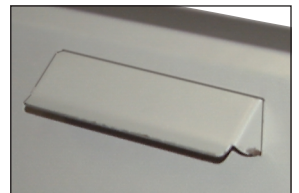
When heat is on low (750 watts) one light goes on. When the heat is on high (1500 watts) two lights go on

On/Off Light



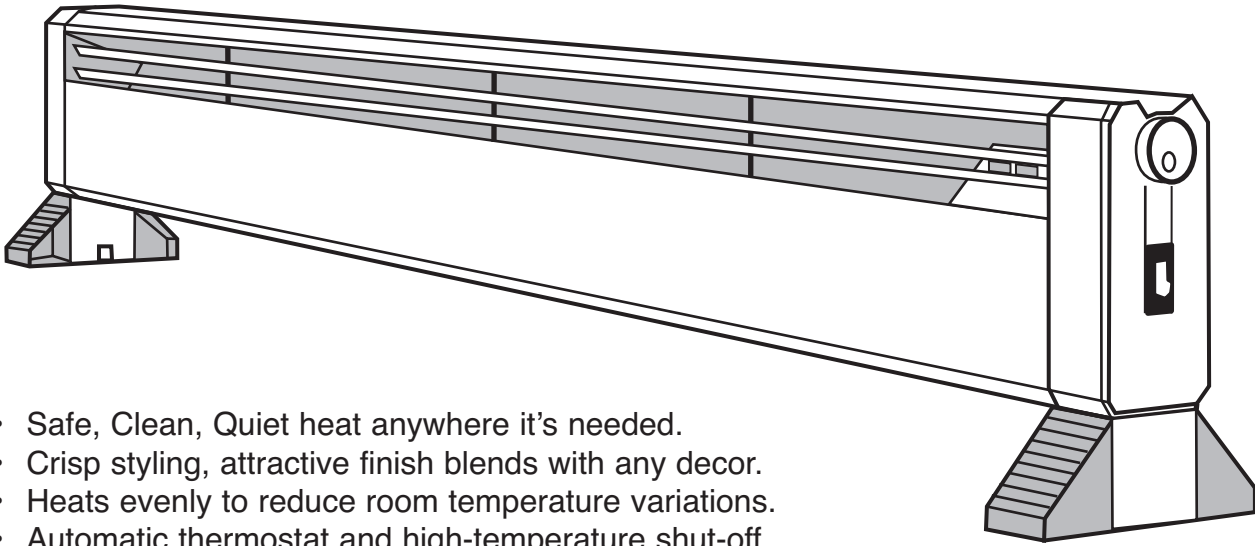
Lets you know heater is operating. When you turn the heater on the light goes on. Turn the heater off and the light goes off.

Carrying Handle

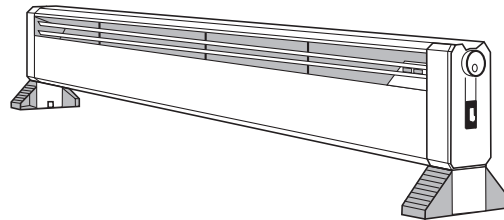
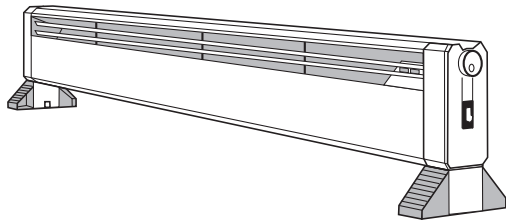
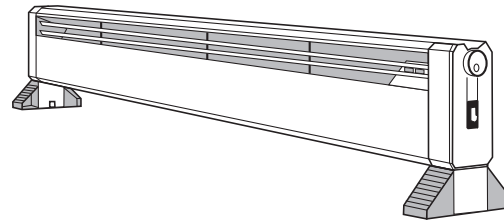
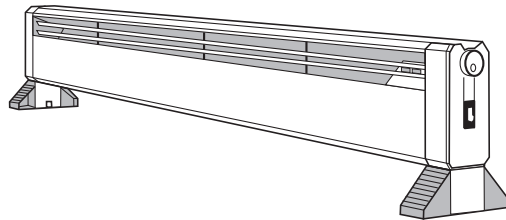
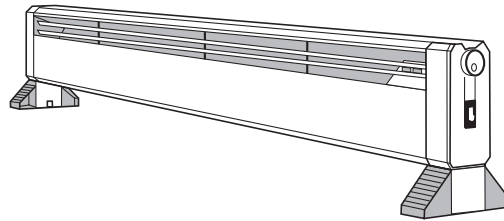
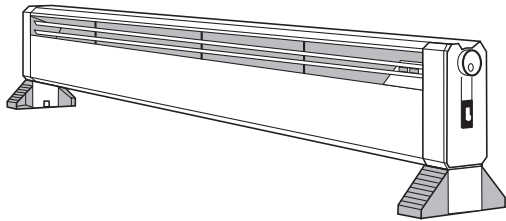


Lets you carry your heater from room-to-room. Tucks away when not in use.

MODEL LFP6152



- Safe, Clean, Quiet heat anywhere it's needed.
- Crisp styling, attractive finish blends with any decor.
- Heats evenly to reduce room temperature variations.
- Automatic thermostat and high-temperature shut-off



Marley
Engineered Products

An **SPX** Company

470 Beauty Spot Road East
Bennettsville, SC 29512
www.marleymep.com